

ایران توشه

- دانلود نمونه سوالات امتحانی
- دانلود گام به گام
- دانلود آزمون گاج و قلم چی و سنجش
- دانلود فیلم و مقاله انگلیزی
- دانلود و مشاوره



IranTooshe.ir



@irantooshe



IranTooshe



پودمان سوم دانش فنی تخصصی		مدیریت آموزش و پرورش کاشان هنرستان شهید بهشتی	نام :		
مدت امتحان: ۹۰ دقیقه	تاریخ: ۹۷/۱۱/۲۴		نام خانوادگی :		
A دبیر: محمدی	نمره :		رشته : شبکه و نرم افزار رایانه	پایه : دوازدهم	

۱- می خواهیم در سایت گوگل، فایل‌های پاورپوینت مربوط به "فناوری نانو" که به زبان فارسی هستند و در منطقه ایران قرار دارند و کلمه "پارچه" در آن فایلها وجود ندارد و در یکسال اخیر به روز رسانی شده اند را پیدا کنیم. در این صورت موارد ذیل را چگونه مقاردهی می کنید؟ (۱,۵ نمره)

all these words:

this exact word or phrase:

any of these words:

none of these words:

numbers ranging from:

 to

Then narrow your results by...

language:

region:

last update:

site or domain:

terms appearing:

SafeSearch:

file type:

usage rights:

۲- در راهنمای نرم افزار word متن زیر مراحل انجام چه کاری را تشریح می کند؟ توضیح دهید. ۱ نمره

1. Select the rows or table that you want to convert to paragraphs.
2. Under **Table Tools**, on the **Layout** tab, in the **Data** group, click **Convert to Text**.
3. Under **Separate text at**, click the option for the separator character that you want to use in place of the column boundaries.
Rows are separated with paragraph marks.

۳- با توجه به متن زیر به سوال بعد از آن پاسخ دهید.

A **network** is a group of devices (PCs, printers, etc.) or "nodes" connected by communications circuits so that users can share data, programs and hardware resources. A network has two main elements: the **physical structure** that links the equipment and the **software** that allows communication.

The physical distribution of devices and their circuits is known as network "topology" or "architecture." The software consists of **protocols**, i.e. the rules which determine the formats by which information may be exchanged between different systems. The transceiver (**transmitter + receiver** → **transceiver**) is the hardware that sends and receives network signals. We could say that cables and transceivers allow computers to "hear" one another, while the software is the "language" that they use to "talk" to one another over the network.

To transmit data, a workstation needs a **token**. As there is only one token per network, only the machine that has this piece of software can transmit on the network. LANs can be interconnected by **gateways**. These devices help manage communications and control traffic on large networks. They change the data to make it compatible with the protocols of different networks.

معادل هر کلمه را پیدا کنید و جلوی هر کلمه بنویسید. ۳,۵ نمره

- | | |
|----------------|---|
| 1. LAN | a. the hardware that sends and receives signals in a computer network |
| 2. network | b. a network that is in a small area topology |
| | c. the arrangement of nodes in a communication system |
| 3. nodes | d. a device that translates protocols between different types of networks |
| 4. protocol | e. only the machine that has this piece of software can transmit on the network |
| 5. transceiver | f. rules that allow the exchange of information over a network |
| 6. token | g. computer devices interconnected in a network |
| 7. gateway | |

۴- مفهوم اختصارات زیر را به همراه عبارت کامل آن بنویسید. ۲ نمره

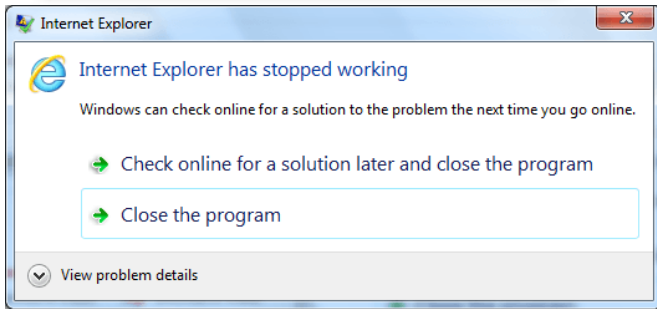
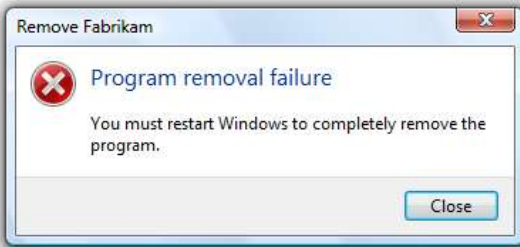
اختصارات	عبارت کامل	معنی
GPU		
BIOS		
LMS		
VGA		

۵- جاهای خالی را با کلمات دو معنایی پر کنید. ۲ نمره

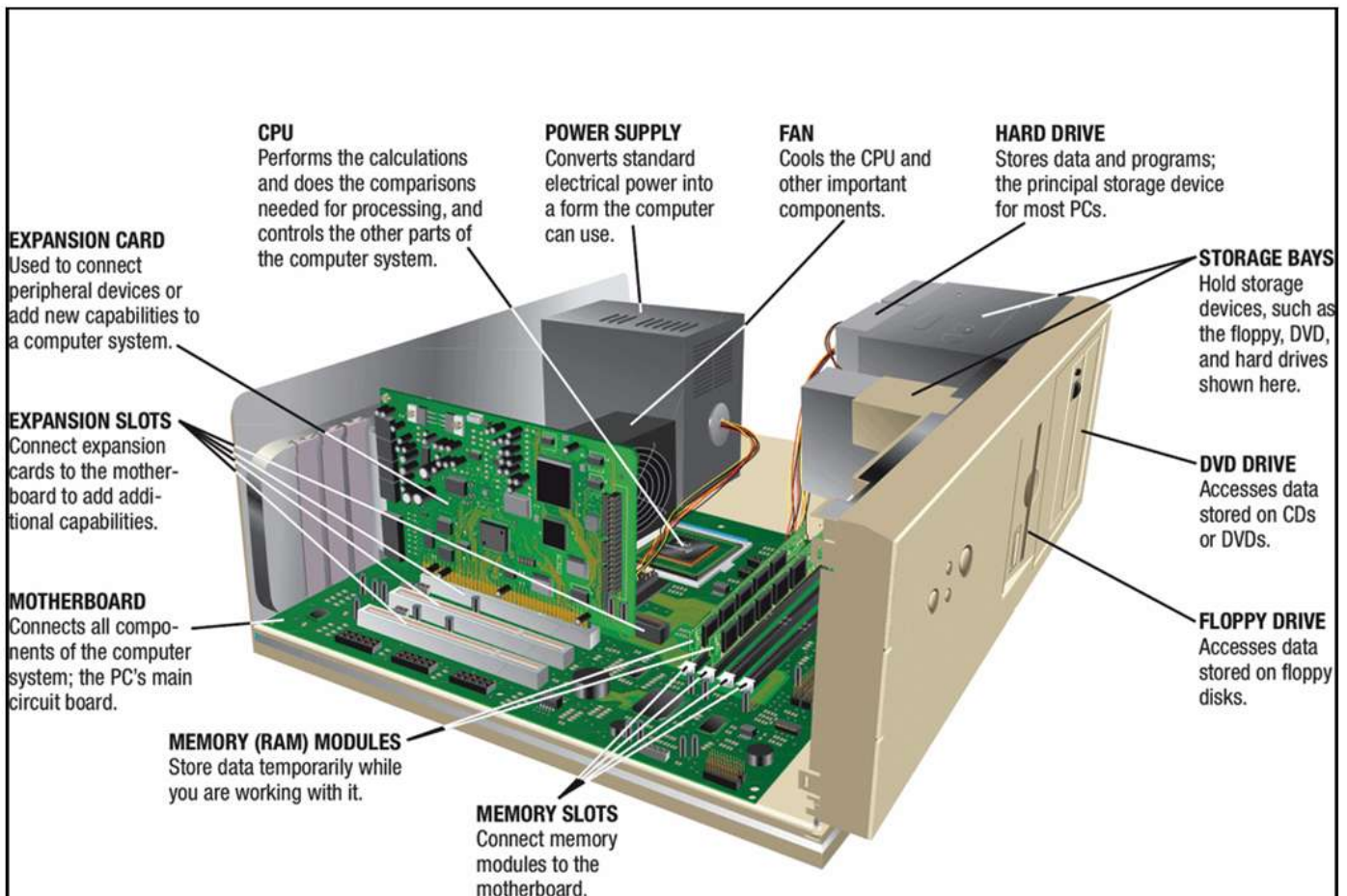
(Bug-Cookie-Memory-Virus)

- 1) is the sum total of what we remember, and gives us the capability to learn and adapt from previous experiences as well as to build relationships.
- 2) A computer is a malicious program that self-replicates by copying itself to another program.
- 3) A software is an error, flaw, failure or fault in a computer program.
- 4) A is a text file that a Web browser stores on a user's machine. They are a way for Web applications to maintain application state.
- 5), an infectious agent of small size and simple composition that can multiply only in living cells of animals, plants, or bacteria.
- 6) A is a baked or cooked food that is small, flat and sweet.
- 7) Computer is any physical device capable of storing information temporarily or permanently.
- 8) The is a small insect.

۶- مفهوم خطاهای زیر را بنویسید؟ ۲ نمره



۷- در تصویر زیر معنی هر کدام از قسمت های مشخص شده را بنویسید. ۵ نمره



۸- اطلاعاتی که در برچسب زیر است را بررسی کنید و هر اطلاعاتی بدست می آورید را بنویسید. این برچسب چه قطعه ای است؟ ۳ نمره

SAMSUNG		WLAN Access Point	
MODEL : WEA524i			
RATING : 48 V$\overline{=}$; 0.75 A(Adaptor), 48 V$\overline{=}$; 0.54 A(PoE)			
Manufactured : 2017.05			
This device complies with Part 15 of the FCC Rules. Operation is subject to the following two conditions: (1)This device may not cause harmful interference, and (2) this device must accept any interference received, including interference that may cause undesired operation.	FCC ID : A3LWEA524I IC : 649E-WEA524I		
	 US E149091 I.T.E		
		SAMSUNG ELECTRONICS Co.,Ltd.	
MAC : 000F02200FA		MADE IN KOREA	
			
2WWQ012345A WDS-A524I/XAR		8 87276 19313 7	
			